

# RMUXF40/RMUXF100 – 70V/100V Transformer Kit

## Product Description

The 40-watt (RMUXF40) and 100-watt (RMUXF100) transformer kits fit all new RoomMatch® Utility loudspeaker models after removing the standard input connector panel. The new RMU loudspeakers have two NL4 connectors on the input connector panel.

These transformer kits cannot be used with earlier versions of RMU208 loudspeakers which have only one NL4 connector on the standard input connector panel.

## Key Features

- Same footprint as standard connector panel
- 70V/100V or 8Ω connections
- Adjustable transformer tap settings

## Technical Specifications

Inputs		
Input type	70V/100V or 8Ω	
Connections	Terminal block	
Audio performance		
Bandwidth	±5dB (70Hz – 15kHz)	
Insertion loss	< 1.5dB (1kHz)	
Tap settings	<b>RMUXF40</b>	<b>RMUXF100</b>
	70V – 2.5 W, 5 W, 10 W, 20 W or 40 W 100V – 5 W, 10 W, 20 W, or 40 W	70V – 12.5 W, 25 W, 50 W, or 100 W 100V – 25 W, 50 W, or 100 W
General		
Compatible with	RMU208, RMU206, RMU108, and RMU105 Small-Format Foreground/Fill Loudspeakers	
Product codes	720562-0010 – RMUXF40W, Black 720367-0010 – RMUXF100W, Black	

# BOSE®

TECHNICAL DATA SHEET



## Applications

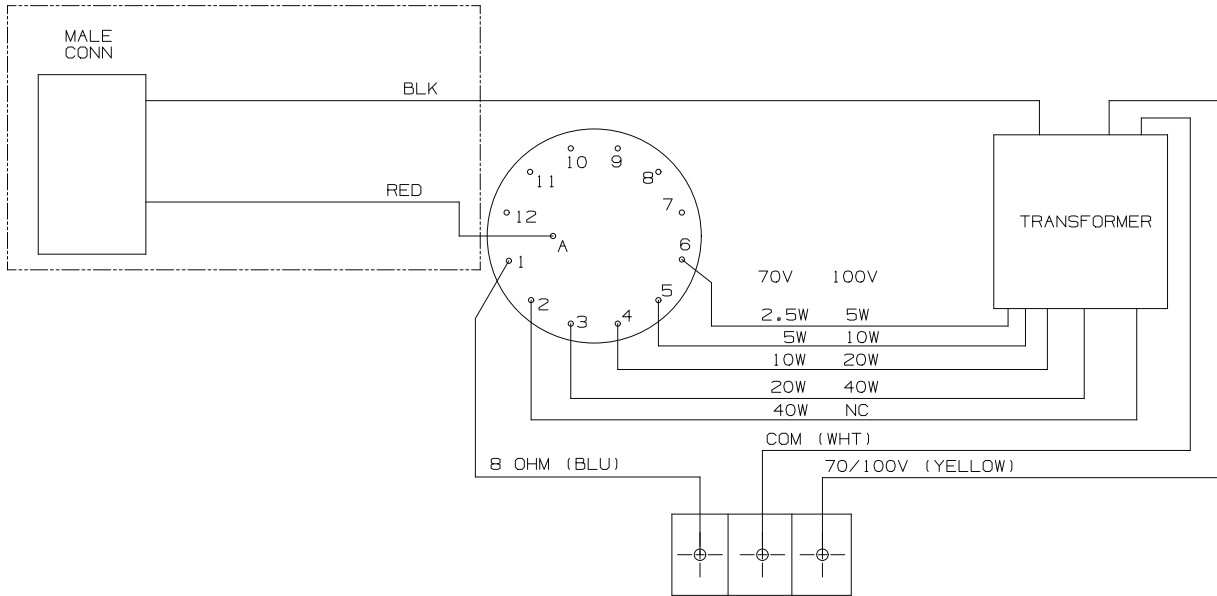
Easy-to-install RoomMatch Utility loudspeaker transformer kits for:

- Hotel ballrooms
- Conference/meeting centers
- Conference rooms
- Sports facilities
- Convention centers
- Houses of Worship

# RMUXF40/RMUXF100 – 70V/100V Transformer Kit



## RMUXF40 Wiring Diagram



## RMUXF100 Wiring Diagram

